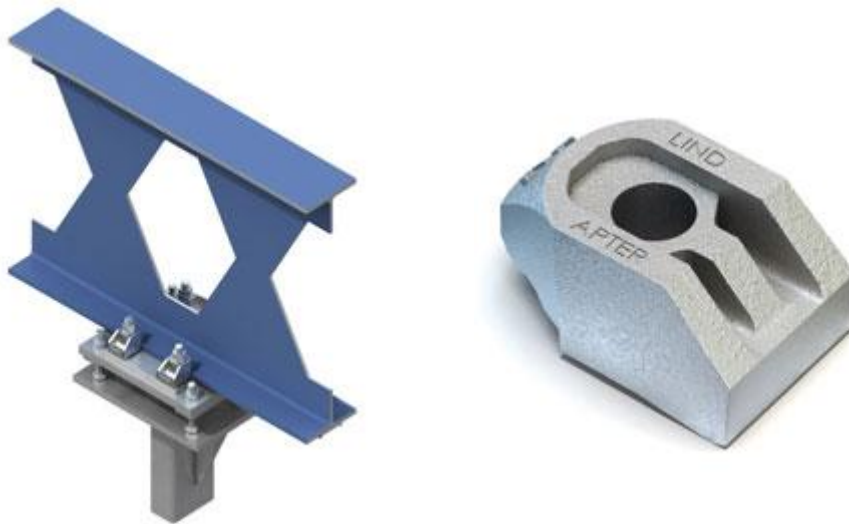


Press Release
May 16th 2011

Lindapter's Design Specified at Gatwick Airport

The steelwork fixing specialist Lindapter designed a unique high capacity support assembly to secure a new baggage system to existing steel beams as part of the £31 million Gatwick North Terminal baggage handling upgrade.

The brief required a method of connecting vertical SHS hollow sections with stiffened end plates to various types of structural sections, including castellated beams, whilst delivering a safe working load capacity of 250kN per connection. Lindapter's technical support engineers proposed the use of Type AF24 clamps with grade 10.9 bolts in a bespoke hanger assembly. The design fulfilled the significant load requirements and vibration considerations, and also removed the need to drill or modify existing steel beams, thereby allowing a faster installation.



Lindapter's drawings and calculations were presented to the consulting civil and structural engineers who approved and specified the Lindapter connection for use at the UK's second largest airport. During installation, the ease of adjusting the Lindapter fixings simplified the precise alignment of the baggage system, despite being suspended from various sized beams throughout the span of the upgrade. A further advantage at the construction phase was that a hot working permit was not needed, removing any associated and potentially costly construction delays.

Gatwick is the latest in a number of airport projects, including Doha and Dublin T2, to utilise Lindapter components and assemblies, with typical applications including securing structural steel, aluminium curtain walling and suspending building services.

Lindapter's high strength Type AF fixings are approved by TÜV Nord, verifying the tensile performance of a four bolt girder clamp configurations of up to 250kN and 70kN in friction. An international distribution network provides worldwide availability of sizes M12-M24, supplied hot dip galvanised as standard for extra corrosion protection. For more information or to view the entire Lindapter range, please call 01274 521 444 or visit www.lindapter.com.

Ends

Original of this article at
http://www.lindapter.com/Case_Studies/Lindapters_Design_Specified_at_Gatwick_Airport