

CI/sfb

(24.4)

Second edition 2002

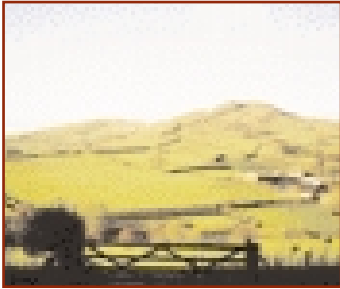


COTTAGE CRAFT SPIRALS

HAND BUILT CAST VICTORIAN & BESPOKE TIMBER SPIRALS

Thank you for requesting our brochure, which we hope you will find informative and helpful in selecting the design best suited to your purpose. We pride ourselves on the service we provide and will be happy to advise you in any way we can.

- *Vielen Dank für Ihr Interesse an unserer Broschüre. Wir hoffen, daß Sie sie informativ und praktisch bei der Wahl der Designs finden, die Ihrem Zweck am besten entsprechen. Wir sind stolz auf unseren Service und beraten Sie jederzeit gerne.*
- *Nous vous remercions d'avoir demandé notre brochure et nous espérons que vous la trouverez*



instructive et utile pour choisir le dessin le plus convenable pour votre usage. Nous sommes fiers du service que nous offrons, et nous serons heureux de vous conseiller de n'importe quelle manière que ce soit.

- *Le agradecemos que haya pedido nuestro folleto : esperamos que lo encuentre informativo y que le ayude a elegir el diseño que le convenga más para su propósito. Nos enorgullecemos del servicio que proveemos, y nos gustará mucho a aconsejarle de cualquier manera posible.*



Cottage Craft Spirals:

were established in 1980 and have earned a deserved reputation for producing spirals to the highest standards. Located in the beautiful Peak National Park in Derbyshire, we have developed a range of stairs which will complement perfectly any type of building or environment. Furthermore, with a full pattern making facility and a foundry in Stoke on Trent, we have complete control in the production of our castings and always ensure their continued quality.



Bespoke spirals

All our stairs are individually built to your specification and are fully erected in our workshop prior to delivery. As skilled craftsmen offering a complete in-house design service, we are able to build stairs in any combination of materials, creating a product which is truly unique to your design and needs. This can involve mixing cast, timber and wrought iron balusters as well as spiral and straight treads.



Worldwide delivery

Exports now account for a substantial part of our business, and we are happy to arrange delivery to any country in the world.

- *Export ist mittlerweile ein wesentlicher Bestandteil unserer Tätigkeiten, und wir sind immer gerne bereit, Auslieferungen in jedes Land der Welt zu arrangieren.*
- *Les produits d'exportation représentent maintenant une partie importante de nos affaires, et nous serons heureux d'organiser la livraison de ces produits dans n'importe quel pays du monde.*
- *Los artículos de exportación representan ahora una parte importante de nuestro negocio, y nos complacerá el organizar la entrega de dichos artículos a cualquier país del mundo.*



British Standards

NB. The suggestion from one of our competitors that aluminium should not be used as the main stairs in a private dwelling if there is no other exit, was based on their mistaken interpretation of sub-clause 6(a) in British Standard BS5395 part 2. The relevant BSI Standards committee (B/208) has since confirmed that this sub-clause should not apply to stairs in domestic situations and is re-drafting it to avoid any ambiguity.

Placing an order

Having chosen the design, diameter and hand (always ascending), please confirm your order in writing with the floor to finished floor measurement and enclosing a 20% deposit (50% for solid timber). The balance is due on collection or prior to delivery.

Remember it is the customer's responsibility to ensure the spiral ordered meets with their requirements and is acceptable to their local building control. Should you require help or advice before making a decision, please do not hesitate to contact us.



Please note: The contents/technical specification of this document are believed correct at the time of printing. Nevertheless, we cannot be held responsible for any errors or omissions or for changes in the details given in this document or for the consequences of any reliance on the information provided in the same.

REGENT RANGE

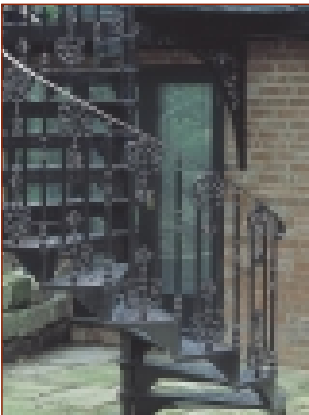
Regent



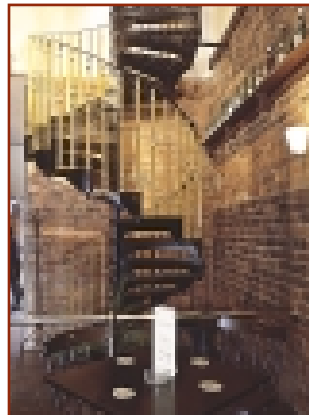
The Regent range

This is a design which adds style and excellence to new and period residences alike.

The traditional Victorian tread pattern is faithfully reproduced to meet current British Standards for creating the main access stair in either a private dwelling or certain commercial applications.



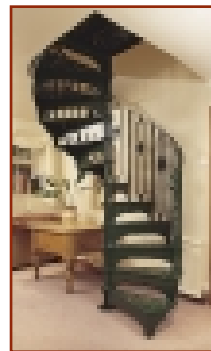
The Regent is available in 1830mm and 2083mm diameters with either three balusters per tread or with the Regent Ornate. Timber handrails can also be fitted if required.



Victoria with floral infill



Victoria with 3 balusters per tread



Victoria with Ornate infill

Victoria with single baluster per tread

The Victorian range

For either internal or external applications, this range will always add that extra touch of class. The finished effect is more than a practical staircase, it is also an elegant piece of furniture. The design is available in five diameters from 1067mm to 1676mm and is suitable for:

- **loft conversions and extensions**
- **minor changes to floor level**
- **access to balconies and verandas**
- **in gardens or conservatories**

To complement the traditional design, we offer a range of balusters as well as optional timber handrails. Please note diameters of 1321mm and above do not require riser bars fitting to the fascia in order to comply with the 100mm building regulation. Given the weight of aluminium, it is not normally necessary to strengthen floors, even at secondary levels, before installing our stairs.



VICTORIAN RANGE/LANDING PLATES

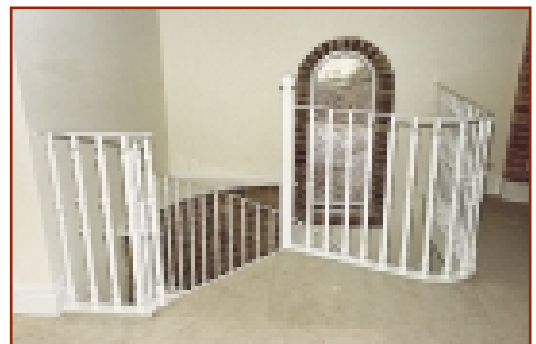


Landing plates

Our landing plates are available in either 60° or 90° angles for all the cast ranges and to any angle and shape in timber.

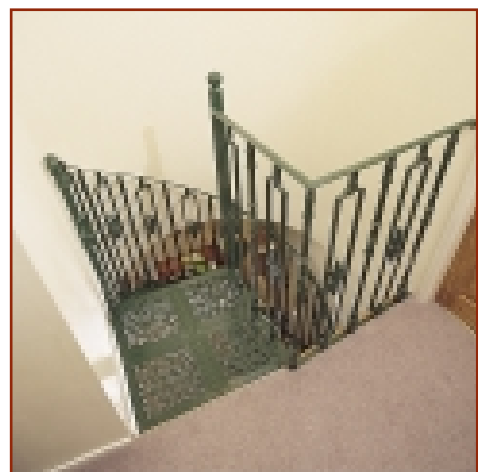
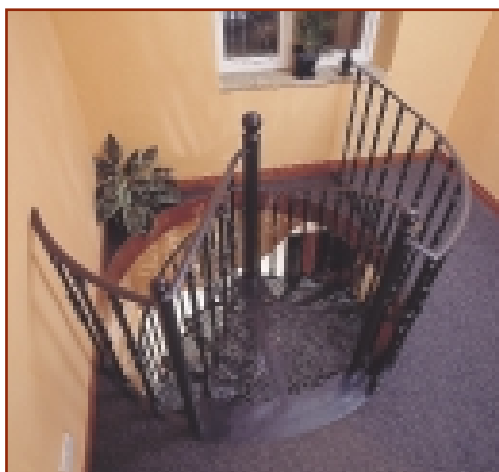
As you will see below, it is not necessary to purchase a landing plate as you can build your own in timber. If you do not purchase a landing, we will provide a bracket for securing the centre column to your landing, adjustable to any angle.

landing by clients



Victorian with 1 extra baluster per tread & straight tread at top

60° landing plate



90° landing plate



Balconies

Whether you are planning to create a minstrels gallery, an external seating area or a simple walkway, our balconies are sure to add a new aspect of refinement to your home.

They can be constructed to any size required, with matching filigree cast plates. Frames are normally in steel but can also be made of aluminium if preferred.



Regent spiral with alternating Regent and Regent Ormate balusters



BALCONIES & BALUSTRADES



Cast aluminium plates 650 x 600mm or 1200 x 600mm with approximately 50% light through put.



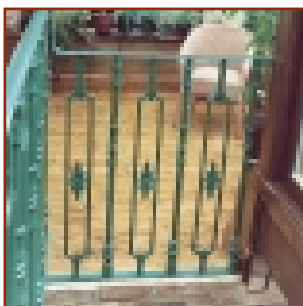
Cast Aluminium gallows brackets available in many designs and sizes



Cast Aluminium plates in various sizes from 285 x 310mm to 400 x 400mm with approximately 25% light through put.

Balustrades

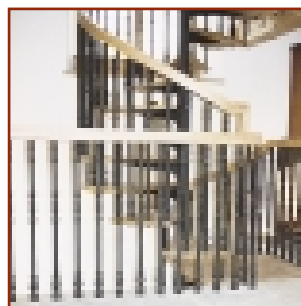
Balustrades can be designed to match your own spiral or balcony using straight or circular handrails in steel or timber to complete the overall effect. We are also able to construct independent balustrades for other applications such as patios, existing straight flights and garden areas



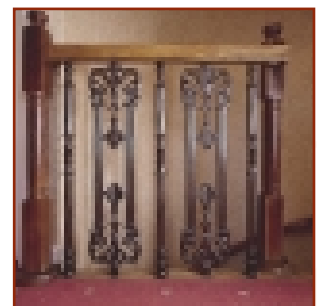
Floral & Victorian balusters



Ornate & Victorian balusters



Victorian balusters with timber handrail



Regent Ornate balusters with timber handrail



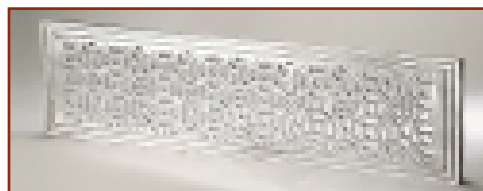
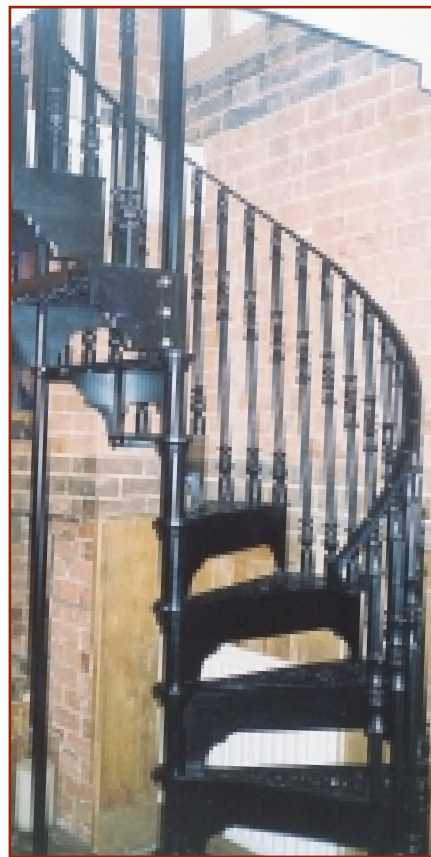
STRAIGHT FLIGHTS



Straight Flights

This new range has been specifically designed to match the filigree pattern of our spiral treads and cast plates for balconies, so as to ensure the same stylish flow. If required, straight flights can be built in conjunction with a spiral section at the top or bottom.

Straight treads are currently available in widths of 1000mm and 700mm, either as tread plates or with front or front and side fascia, but if you require different sizes, please simply contact our office.



*Parisienne
with cast top*



*Parisienne
with timber
treads*

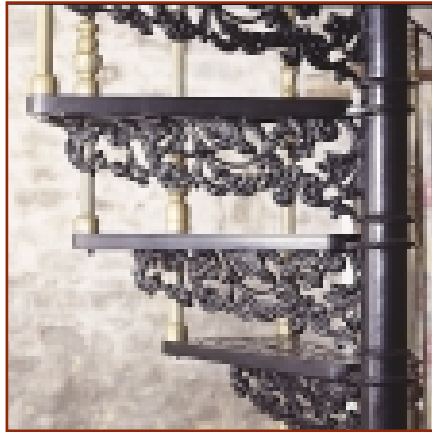


The Parisienne range

This beautiful new bracket has been designed to fit either a cast tread or timber tread, as with the Scandinavian range. The current range of cast tread options is 1100, 1250, 1400 & 1600mm, but we will be happy to build alternative sizes if required.

Timber treads are available in any diameter up to 1600mm.

Parisienne spirals offer the choice of a Victorian or plain baluster, together with the options of timber handrails and carpet recessed timber treads.



Parisienne Spiral



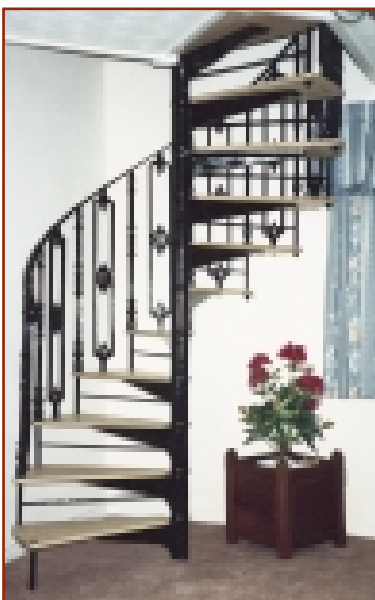
The Scandinavian range

Based on a contemporary design, this model offers a more modern feel, with many options for creating your own individual style. The treads are either finest birch faced timber or solid timber, supplied ready sanded for just the finishing touch to be applied.

Scandinavian with plain balusters and ash treads



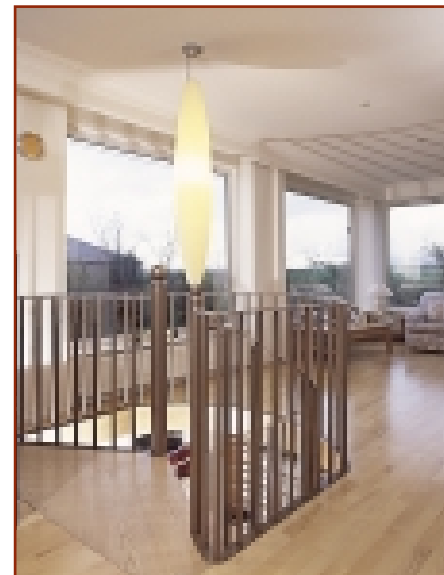
One Victoria baluster per tread



Alternating Victoria & Ornate infill & steel riser bars

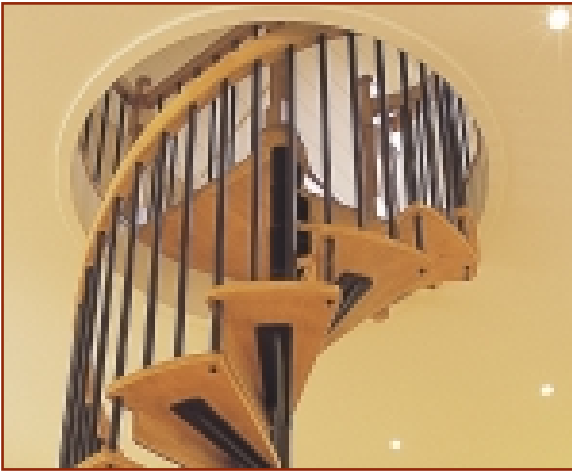


Plain balusters & timber riser bar



The Scandinavian can be ordered with either the Victorian baluster or a plain baluster. Riser bars can also be fitted if required to meet current building regulations. This versatile design is available in any diameter to suit your available space. If this is limited, we will endeavour to design a suitable spiral to fit. Timber handrails & carpet recessed treads are both available.

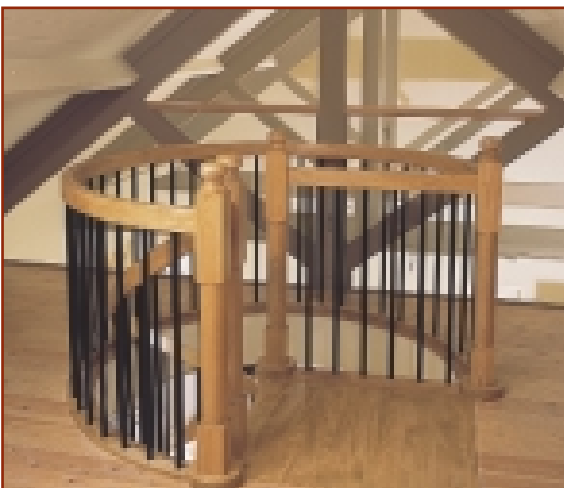




The Scandinavian range

With this versatile range we can vary the use of timber and metal with beautiful effect. This Beech stair with timber handrail and treads creates a modern yet elegant appearance. Timber or Victorian cast balusters can be fitted if preferred.

These spirals can be built in any timber and any diameter to satisfy most applications



Matching landing balustrade can be built to fit either a circular (as illustrated) or square well.



SOLID TIMBER SPIRALS

Solid Timber Spirals

The prestigious **Wimpey Homes** development at 156 **Foregate Street, Chester**. We were delighted to design and supply a number of spirals for the penthouse flats.



Spiral stairs provide the perfect answer in warehouse, loft and sleeping deck developments



ST

*Landing
plate and
balustrade*



Solid Timber Spirals

Our timber ranges are completely flexible and can be designed to a client's specification. We can manufacture in any timber and to any diameter.



Plain design with ringed balusters and bobbins

*Turned
balusters
and
centre
bobbins*

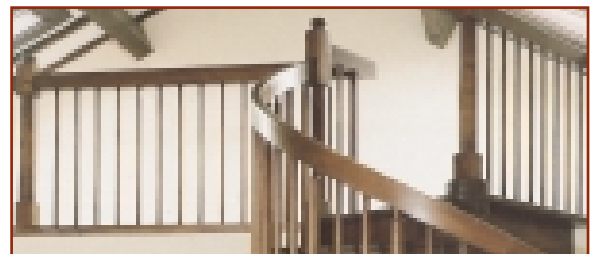
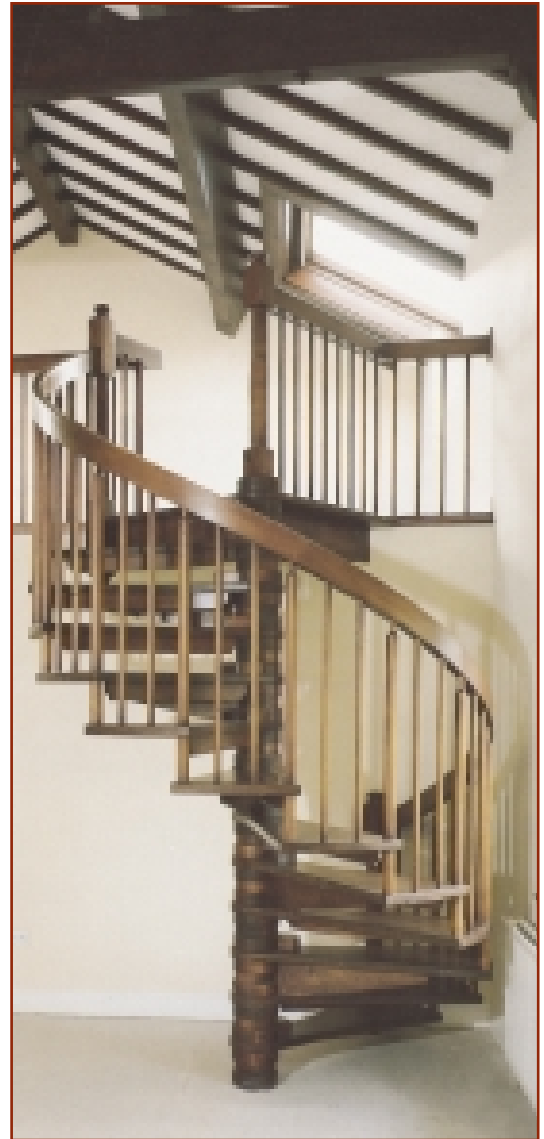


Solid timber spirals

We have long been known as one of the UK's few producers of fine quality timber spirals. The natural beauty of timber and the graceful lines of a spiral add elegance and distinction to any home or office. Below are some of the designs which can be shaped to personal taste or to match an existing setting.



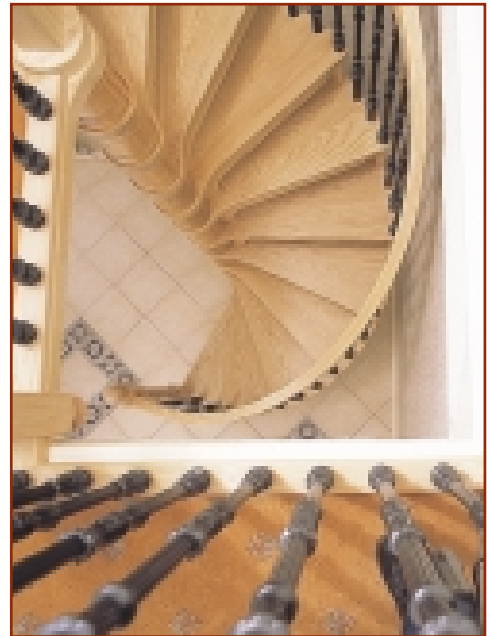
An American White Ash spiral built into a curved wall with smooth centre column and closed risers. The timber handrail is hung off the wall.



Simple design with plain balusters and stepped bobbins.



SOLID TIMBER WITH CAST BALUSTERS



American White Ash spiral with Victorian cast balusters. Ornate bobbin and newels.



American White Ash with alternating Victoria and Floral cast balusters. Ringed bobbin and newel posts.





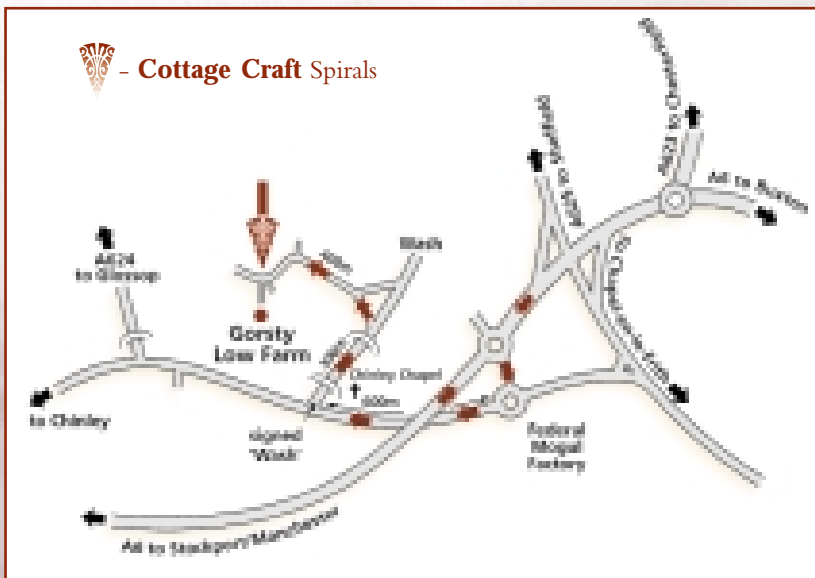
SPIRALS of DISTINCTION

Come and visit our showroom

As most people purchase a spiral only once in a lifetime, it's important to get it right first time. Why not make a personal visit to the relaxed atmosphere of our showroom - and get a true

feel for the different diameters and designs available? You will also be able to see for yourself the care and attention to detail we apply to everything we design and build.

We will be happy to advise you on layout and building regulations, provide any drawings which may be necessary, and show you how simple our products are to install. Our opening hours are 8.30am to 5.00pm Monday to Friday, with weekends and evenings strictly by appointment



only. And if the distance you are travelling means overnight accommodation, we can help in finding a suitable location.

Quality

As members of the **Spiral Manufacturers' Association**, we work within the strict rules of the Association, using only BS approved materials. As further examples of our commitment to product quality: Each spiral is individually produced and built specifically for your purpose. Because we can vary the height of each tread, every rise is the same height. Our spirals fit your home, not the other way round. Quality patterns and sand casting enables us to achieve very high pattern definition. Handrails are hand built using 40mm convex D section, which is more comfortable to the hand.



COTTAGE CRAFT SPIRALS

The Barn, Gorsty Low Farm, The Wash, Chapel-en-le-Frith, SK23 0QL. Tel: +44(0)1663 750716 • Fax: +44(0)1663 751093

www.castspiralstairs.com • email: sales@castspiralstairs.com